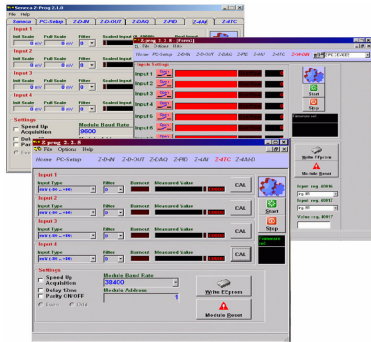


General Features



The Z-PROG software is a useful instrument and in some cases necessary for the configuration of the modules of the Z-PC Series. For the utilisation of this software, it is necessary to connect the module to be configured to the PC by means of an appropriate RS232-RS485 (Z107 or S107P) serial interface converter in the case where a standard serial port of the computer is used.

Functions

- Visualisation and saving of the input analogue trend
- Visualisation of the state of the digital input counters
- Reading of the module configuration
- Saving on file of the configuration set
- Loading from file of the configuration that is to be set
- Software in English

Configurable parameters

- Addresses, velocity and times for the control of the serial interface
- Start and end of the input scale
- Personalised technical units
- Extraction of the square-root
- Positive or negative burn-out
- PID regulator parameters
- Input digital filter
- High frequency inputs
- Method of functioning of the outputs
- State of safety of the outputs